

Show Garden Competition Guideline

1. Event Summary

- Title: Seoul International Garden Show 2020; SIGS2020
- Date: October 8th(Thu), 2020 ~ 18th(Sun), 11 days
- Venue: District around Seoulllo 7017 and urban regeneration area
(Jungnim-dong and Malli-dong)
- Theme: Link Garden, Think Life

2. Competition Summary

- Title: Show Garden Competition of Seoul International Garden Show 2020
- Theme: Link Garden, Think Life
- Venue: Son Gi Jeong Park (101 Songijeong-ro, Jung-gu, Seoul)
- Area: 5 locations, approx. 150m² per site
- Garden Type: Gardens which will be maintained on the site after the show
- Budget per site: 45,000,000 KRW
- Prize money: 12,000,000 KRW (Gold prize: 1 team),
4,800,000 KRW (Silver prize: 1 team),
2,400,000 KRW (Bronze prize: 3 teams)
- Host: Seoul Metropolitan Government,
Organizing Committee for Seoul International Garden Show 2020
- Supervisor: Landscape Architecture Korea Inc.

3. Eligibility of Participation

- Any experts and professionals of relevant fields from Korea and abroad.
- The maximum number of participants in a team is 2, and either one of the two should be designated and registered as a representative, who has a right to submit and receive the documents related to this competition, and obtain and abandon authorities.
- Following tasks should be carried out by selected team.
 - A garden has to be actually constructed based on the selected design.
 - A garden has to be maintained and managed throughout the show.
 - An opening ceremony and major events during the show should be attended by one or more members.
- A collaborative work with a company is allowed, but the company cannot become a representative.

- As there is a chance that the entry of overseas participants into South Korea might be restricted by unavoidable reasons(eg. COVID-19, etc), it is necessary to form a consortium with local businesses for construction. And if a participant living outside South Korea who is chosen in the initial screening process asks for an arrangement with a construction company, the supervisor can recommend one. (It is advisable to participate in the competition, cooperating with local designers.)

4. Competition Schedule

- E-mail application by **17:00 on July 17th, 2020**
- **Schedule**

Announcement Period	June 12 th , 2020 (Fri) ~ July 17 th (Fri), 36 days - 'Project Seoul' homepage news section (www.project.seoul.go.kr)
Q&A	June 22 nd , 2020 (Mon) ~ June 24 th (Wed) Inquiries to be registered - by E-mail : klam@chol.com June 30 th , 2020 (Tue) Questions to be answered - on 'Project Seoul' homepage news section
Submission	July 15th, 2020 (Wed) ~ 17:00 July 17th (Fri) (by E-mail : klam@chol.com)
Initial Screening (documentation)	July 24 th , 2020 (Fri) ※ 5 teams to be selected
Initial Screening Results Announcement	July 29 th , 2020 (Wed) - Notification on 'Project Seoul' homepage news section
Workshop	14:00 August 6 th , 2020 (Thu) ※Site allocation - Online participation by overseas participants
Work Presentation	14:00 August 20 th , 2020 (Thu) ※Final design presentation - Online participation by overseas participants
Garden Construction	September 7 th , 2020 (Mon) ~ October 6 th (Tue), 30 days
Second Screening (onsite)	October 6 th , 2020 (Tue) - For ranking decision(Gold, Silver, Bronze Prize) (results to be announced at the opening ceremony)
Award Ceremony	October 8 th , 2020 (Thu) Opening Ceremony
Garden Exhibition	October 8 th , 2020 (Thu) ~ October 18 th (Sun) (Gardens to be maintained on the spot after the show, maintenance period to be determined separately with an agreement)
Financial Settlement Submission	To be submitted to the supervisor by October 26 th , 2020 (Mon)

※ The schedule offered by both the table above and this guideline is based on Korean Standard Time (GMT+9) and the competition schedule and the date for the result announcement are able to change depending on the conditions the host and the supervisor. If there is any change, it informs on 'Project Seoul' homepage news section.

5. Formats for Submission

○ General

- The official languages of this competition are Korean and English, the numbers are written in Arabic numerals, and measurements are based on the metric system.
- In case of any conflict in interpretation between Korean and English, Korean will have priority.
- Drawings and documents submitted to the competition should be written either in Korean or in English, and if written in English, they should be clear enough to avoid any chance of interpretational misunderstandings. Should there be any conflict in interpretation, the host will have priority in final interpretation.
- Necessary information such as bearing and scale must be described in drawings.
- Once the application documents and entries are submitted, the contents cannot be modified, changed, or supplemented.
- Colors and 3D can be expressed on the submitted drawings and documents.
- Regardless of the contents, any indication that can be mistaken for the author's password, the name of a specific company, the name of an organization, and a symbolic marks are prohibited.

○ **By 17:00 on July 17th, 2020 (Fri)** the following documents and entries should be submitted by e-mail.

- ① Application for entry (including Consent to Collection and Use of Personal Information): Forms 1 & 2
 - ② Drawings of work for screening (A2 vertical): 1 page
 - One piece of A2(420mm×594mm) size drawing should be vertical and accompanied by an identification number on the top right corner, in a JPG file format.
 - The resolution of the JPG file should be at least 300dpi so that it can maintain its picture quality when printed out with an original size.
 - ③ Work Explanation (A4 vertical): 1 file within 10 pages in total (excluding cover and table)
- ※ Work explanation need to include the following contents.
- Cover(Form 3), table of contents
 - 3-dimensional images (if necessary)
 - Explanation on the summary and concept of the garden
 - Major drawings including arrangement plan, ground plan, elevation drawing, and cross-sectional drawing
 - Planting list
 - Construction Plan (including construction schedule)

Overseas participants should specify whether it is possible to cooperate with a domestic construction company in South Korea or want to receive a recommended.

- The costs calculated statement: categorized as design, planting, installation, pavement, and miscellaneous. The design fee can be up to 15% of total cost.

④ Record of the entries and awards in the field of gardens in Korea or abroad:

1 file - format not specified

⑤ Appointment of representative (when applying as a group) - Form 4

⑥ Written pledge - Form 5

- The confirmation of the entry will be notified individually to a registered e-mail.

6. Copyright, Publishing, and Display

- The submitted work must be an original creation by a participant or a group of participants, and must not infringe the copyright of a third party. Should the submitted work infringe the copyright of a third party, any relevant responsibility belongs to the participant or the group of participants, and the awards will be cancelled.
- While the copyright of the submitted work belongs to an participant or a group of participants(creators), the host can use either all or part of it by copying, displaying, distributing, lending, airing, and creating derivative work for publishing, exhibiting, promoting and establishing operational plans. In this case, the copyright fees are not paid.
- After screening process, either all or part of the submitted work can be exhibited, and if an participant or a group of participants wishes, it can be put on display anonymously, with the host determining the conditions of the exhibition.

7. Review & Screening

- If the review and screening process discovers that the submitted works do not serve the purposes of the competition or the level of the submitted works are below acceptable standards, it is possible for the host not to select prize-winners or adjust the number of them.
- For fair screening, the participants do not disclose their submissions prior to the selection of prize-winners.
- The participants are not allowed to challenge the results of the screening, and screening scores will not be disclosed.
- ① Objectives and Standards of Screening
 - The objectives of the screening is selecting the best design that best matches the purpose and subject of the competition.

- The criteria of the screening are, in principle, determined by the judging committee.
- The specific judging methods, evaluation items, points, and other necessary matters can be separately determined by the judging committee.

② Disqualification

- If falling under any of the following matters, it is presented to the judging committee, and disqualified according to the decision.
 - When it is found out that the contents of the documents submitted at the time of application are incorrect or clearly false due to the negligence of the participant.
 - When it is decided that the submitted drawings and documents specify the participant or include the password recored on them in an attempt to affect the screening process.
 - When imitating the works submitted to similar garden design competitions. (such as plagiarism)
 - When violating the other regulations of this competitions.
- When there is a part that was re-created under the inspiration of another person's work, it must be described in detail in the work explanation, and it is decided by the judging committee whether there is plagiarism or not. In addition, if the above matters are not listed in the work manual and it is discovered later, the participants are responsible for disqualification, cancellation of prizes, and return of the prize money.

③ Types of Screening

- Review process is composed of the initial documentation screening and second onsite screening.
 - Initial documentation screening: review of the submitted documents for selecting the five teams that will construct gardens.
 - Second onsite screening: review of the constructed gardens for ranking.

④ Key Considerations for Evaluation

- Design direction: creative garden designs that match the purpose and subject of the competition.
- Standards of review. (same for the initial and the second)

Evaluation Items	Detail	Points (100)
Creativity	- Ideas that are novel and creative in expressing the subject	20
Aesthetics	- Plans for planting and facilities using colors and materials that show off the aesthetic sense - Harmony between the garden and the surrounding environment (topography, nature, etc.)	20

Practicality	- Design of a garden that is easy to create and manage and can be used by citizens	20
Construct Ability	- Understanding of construction that can actually implement planting and facility design - Feasibility of creating the top quality work within limited budget and schedule - Use of materials that are strong against contamination, damage, wear, and harm, and are easy to manage after completion	20
Subject Reflection	- Connection between the work and the subject, and the appropriateness of storytelling	20

8. Judging Committee

- The judging committee is composed of the members of the organizing committee, experts in diverse fields, and internal members.
- The judging committee can begin its meetings with the attendance of 7 or more judges, and the chairman of the committee is elected from among the committee members at the committee meeting.
- The chairman of the judging committee can prepare the rules for review and screening based on the guidelines of the competition, and with the consent of the judging committee, can decide the details necessary for the review. The chairman writes and hands in a report of the results of the screening, including the reason for selecting the winning works and the process of the screening.
- The works that fall under the following matters will be disqualified according to the decision of the judging committee, and if the reason for disqualification is found after the screening process is completed, the award may be cancelled by the decision of the organizing committee of Seoul International Garden Show 2020.
 - Failure to comply with the regulations and requirements of the competition, such as qualification for participation and maintaining anonymity.
 - Under the 7-②, if the submitted work falls under the criteria for disqualification.

9. Selection of Prize-winners and Awards

- The results of the initial screening will be posted on the homepage according to the schedule, and the winners will be notified individually.
- The date of the announcement can be adjusted depending on the host's circumstances, and the adjustment will be announced on the website.
- For the gardens selected in the initial screening and constructed, the second onsite screening (for ranking decision) will be conducted, and the awards will be decided by the judging committee.

- All information will not be released until the results of the screening are announced.
- The types of the prize-winners and the awards are as follows:
※ A certificate of merit for each team and prize money of 2.4 mil. KRW in total for the 5 selected works.

Awards	Gold 1 team	Silver 1 team	Bronze 3 teams
Prize Money	12,000,000 KRW	4,800,000 KRW	2,400,000 KRW

- If a group participant is selected, the prize money is paid to the representative.
- For the overseas winners (in the case of group, it is judged based on the representative), the prize money is converted based on the exchange rate at the time of payment (within 30 days after the award ceremony) and paid in US dollars.
- The prize money includes all extra expenses such as taxes, remittance charges, and currency exchange fees.

10. Costs and Support

- The participants selected in the initial screening (5 teams) will enter into an agreement with the supervisor on supported matters such as creation of works and payment of expenses, and will construct gardens. The agreement will be concluded at a workshop. (scheduled on August 6th)
- The budget per site is 45,000,000 KRW
 - This is the amount that includes all the expenses required to create a garden, such as costs for design, construction, and material.
 - Participants can set up a design fee of up to 15% within the composition cost of 45,000,000 KRW.
 - Total Costs will be paid by supervisor.
30,000,000 KRW for the deposit will be paid within 20 days after the conclusion of the agreement, and 15,000,000 KRW of the remainder will be paid within 30 days after the completion of the garden. However, the remainder can be paid only if there is no problem with the final settlement documents.
 - If the selected participant does not have a business operator, the budget is paid to the company designated by the participant.
- For overseas participants who are selected by the initial screening, part of the airfare for the creation of works and the attendance at the award ceremony is subsidized according to the criteria below.
 - The amount of support is different depending on the participant's residence, and expenses for stay in South Korea are not supported.
 - Airfare will be paid within 30 days after the relevant supporting documents (receipt, etc.) are submitted to the supervisor.

- The participant residing overseas who has a Korean national, will be able to take airfare support, if them submits a certificate of overseas company employment or a certificate of overseas university enrollment.

Region	South Korea	Asia	Other than Asia
Travel Expenses	-	within 1 mil. KRW	within 3 mil. KRW

11. Construction

- The gardens are to be constructed and maintained in and around Son Gi Jeong Park.
- In consideration of the continuous presence of the garden after the garden show, a design that can guarantee the user's safety, maintainability, and feasibility should be proposed.
- The construction of the selected design should be completed before the second screening.
- Within 30 days after being selected by the initial screening, the participant should submit the practice plan (including the progress schedule) and if adjustment is required, submit it again after revise it under mutual consultation with the host.
- A construction plan should be established including the maintenance and management during the construction period such as pre-production of facilities, construction of facilities, planting works, and irrigation.
- Those selected for the competition should cooperate and comply with the protective scheme for existing trees and the basic rules for the maintenance and management of the exhibition, which will be delivered later.
- Participants should develop a construction plan within the budget, and they will be responsible for any expenditure exceeding the budget.
- Participants must present a legitimate design that comply with the relevant regulations and procedures.

1) Design

- It is recommended that environmentally-friendly materials be used, and a finishing plan for materials be included. In addition, for all other facilities, a finishing plan should be established with safety being considered.
- Participants should plan the inner course, considering the adjacent gardens and existing facilities, and also consider the paths used for the maintenance of the garden and the space where visitors can appreciate it.
- Participants should plan a pedestrian walkway connecting the adjacent walkway and the inner course of the garden not to disturb traffic of people when planning

the garden creation.

- Participants should exclude hazardous plants, toxic plants, and protected species from the species for planting, establish a planting plan based mainly on perennials considering the fact that the gardens will continue to exist even after the garden show over, and come up with a proper planting ground and plant species with the amount of sunlight and depth of planting in mind.
- When it comes to plants and required materials, participants should consider whether they can be available domestically and how much time it takes to clear customs.

2) Maintenance and Management

- During the garden show, maintenance and management should be done based on the blooming time of the flowers and the characteristics of the plant species.
- Since the gardens will remain after the garden show, a separate maintenance and management plan must be submitted for the issues requiring special attention. (The period for the extended display of the gardens will be decided by the agreement.)

3) Safety Control

- Participants should be careful not to cause safety accidents due to the installations in the garden during the construction of the garden or after its completion, and establish preventive measures for safety accidents.
- In the event of a safety-related problem, the host may ask the participant who implements the garden to correct the problem and rebuild the garden, and the participant is responsible for the cost required for the reconstruction.
- Participants prevent safety accidents and fires in the field during the construction of the garden or during the fair, and ensure that the participating workers are equipped with safety equipment during construction.
- Participants should provide safety education to all workers of the construction.

4) Others

- Before the construction, participants should take measures in advance to ensure that there are no obstacles in the construction of the garden based on the site research, and construct after sufficiently reviewing the conditions of the site.
- In case of disagreement regarding the content of the competition or the guidelines, the host's opinion has priority.
- General matters not specified in the competition guidelines are subject to relevant regulations.
- For any unclear matters in the content of the competition guidelines, inquiries can be made through a 'Questions and Answers' session during the period announced in the competition schedule. In addition, the answers to the questions are

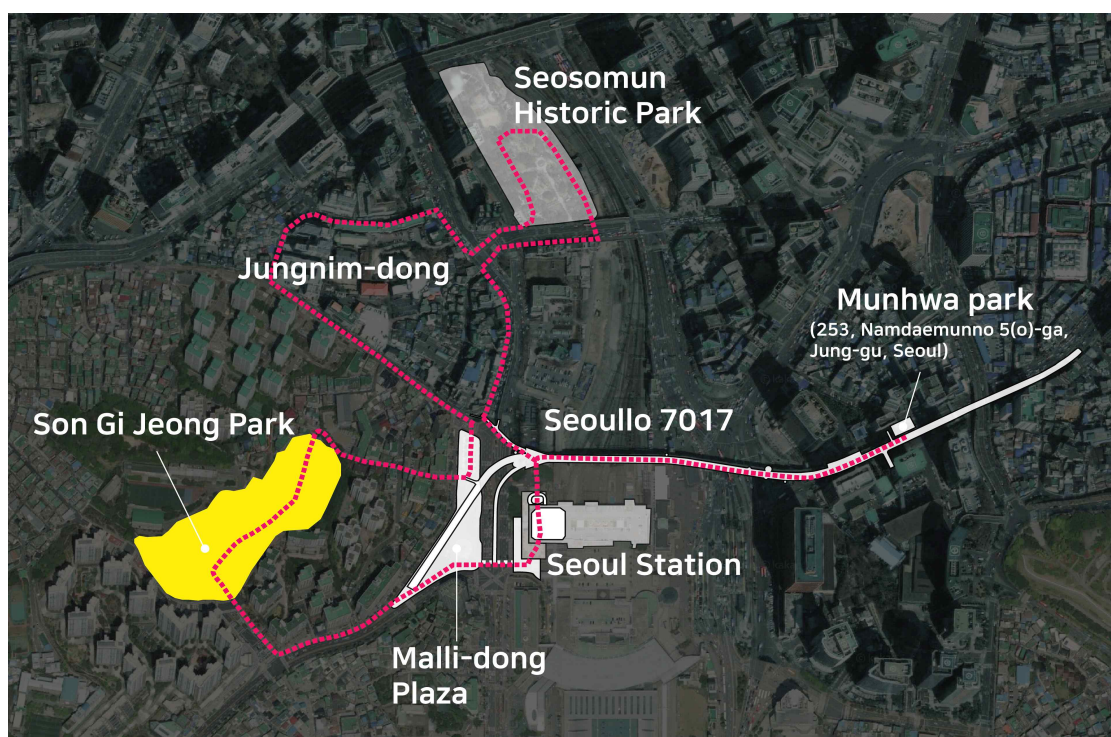
provided through the 'Project Seoul' homepage news section in order for all participants to check them out.

- Responses to inquiries are considered additions or corrections to the competition guidelines.

12. Site

1) Location & Area

- Location: Son Gi Jeong Park (101 Songijeong-ro, Jung-gu, Seoul)
- Area: approx. 150m² (L: 15m, W: 10m) per garden



Location of Son Gi Jeong Park and other major sites

2) Candidates for Site

- Candidates for the site are the following five places, and the final site can be changed by the circumstances of the host.
- Site ①, ④ and ⑤ will be constructed by the supervisor in the future, so that all participants can create a garden under the same conditions.
- The garden design selected in the initial screening should be modified and supplemented according to the present conditions of the time. The site for each team will be determined at the workshop. (scheduled for August 6th)
- Participants only need to submit a garden design plan of general site, 15m in length and 10m in width, and do not need to designate one of these five candidates.



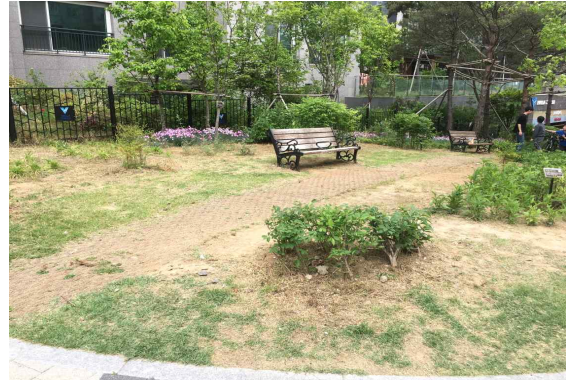
Site ①



Site ②, ③(creating 2 gardens)



Site ④



Site ⑤

13. Misc.

- The more information of the site necessary for construction is provided to selected participants in the initial documentation screening.
- If the construction is not carried out according to the original plan without consultation with the host, the full amount of the support funds must be returned.
- If a participant does not submit a reason for abandonment within 5 days after the results of the initial documentation screening are announced, or if a participant gives up the construction of the garden without any inevitable reason such as natural disasters, that person will be disqualified from entering the Seoul International Garden Show for the next two years.
- If there is a sponsoring company, it can be written on the signboard under the condition that it does not impair publicity.

- Contact: Landscape Architecture Korea Inc. klam@chol.com +82-2-521-4626

Landscape Planning Division, Seoul Metropolitan Government +82-2-2133-2112